

# **Westminster City Council**

## **School Organisation and Investment Strategy**

### **2015**

#### **Executive Summary**

In October 2014 the number of pupils on roll in state-funded schools in Westminster were:

- 272 at 4 Nursery schools
- 10,632 (plus 9638 nursery) at 42 Primary schools
- 7,893 at 10 Secondary schools (plus 1,966 in 6<sup>th</sup> forms)
- 161 at 3 Schools for children with Special Educational Needs
- 75 at one Alternative Provision school for children unable to attend mainstream schools.

Westminster has invested heavily in recent years to provide sufficient school places. The current investment programme will deliver 918 new primary places, including free schools, while 600 new places are being provided in a new secondary free school. Plans are being developed to provide over 500 additional secondary places to meet projected need across the City.

School place planning is a complex business in a constantly changing social and economic environment. On the basis of current population projections, the Council believes that the investment programme will be sufficient to meet projected need. New housing development, especially in regeneration areas, may further increase the need for school places. The Council will always seek to fill places as shown in the Published Admissions Numbers (PAN), and expand the capacity of existing schools where possible.

Schools represent a major asset in the community, so as well as providing an excellent standard for education, the buildings are increasingly being used to deliver other strategies for improving the lives

of very young children, pupils leaving schools and entering the world of work, and a wide range of other services, in a cost effective and coordinated way.

This Strategy sets out the Council's plans to respond to these factors. It will be revised regularly.

## **1. Background**

London as a whole is facing an increase in demand for school places. The baby boom of 2001-2011 has meant that the number of pupils (aged 5-19) within some London boroughs has grown by 107,000, or 8.2 per cent, when compared to an overall reduction nationally of 0.2 per cent. Forecasts show the pupil growth rate in London over the six years from 2012/13 is expected to be twice that of any other region. By the start of the 2017/18 academic year, pupil numbers in London are expected to have increased by 18 per cent or 194,000, with some boroughs forecasting growth patterns of up to 36 per cent.

In Westminster, the school population in state-funded schools has increased as follows, but the number of places on offer, particularly in primary schools, has also increased, mainly due to the opening of 3 new free schools approved by the DfE since 2011:

| <b>Year</b> | <b>Primary School pupils on roll (excluding nursery)</b> | <b>Secondary school pupils on roll (excluding 6<sup>th</sup> form)</b> | <b>Secondary school pupils on roll (including 6<sup>th</sup> form)</b> |
|-------------|--|--|--|
| 2010        | 9,895  | 7,086  | 8,840  |
| 2011        | 10,601   | 7,279  | 9,162  |
| 2012        | 10,297   | 7,412  | 9,144  |
| 2013        | 10,688   | 7,535  | 9,371  |
| 2014        | 10,691   | 7,654  | 9,620  |

The provision of sufficient school places for all children who require one is a statutory duty for local authorities. Westminster has an extensive programme to deliver the additional school places required in the next 10 years. As well as expanding existing schools, Westminster has a policy of collaborating with free schools providers to provide new places where there is an established need.

The School Organisation and Investment Strategy 2014-2016, noted that a development programme to provide 435 new secondary school places (excluding 6<sup>th</sup> form), plus the proposed UTC at Victoria, would be sufficient to meet the Council's statutory duty until 2020, and avoid a deficit arising. The Strategy also recognised the Marylebone Boys School (with a capacity of 600 plus 6<sup>th</sup> form), but it was not included in the Council's plans for new places because it had not yet secured a site and the contribution to the Council's need was not clear. Although the School has opened, it is in temporary accommodation in Brent and will open in Westminster for September 2017.

## **2. Projections**

Westminster subscribes to the GLA School Roll Projection Service (SRP), and the annual projections form the initial source of data for school place planning. The GLA's school roll projection model incorporates historic roll data, regeneration, and multiple sets of GLA ward-level population projections. These school roll projections are also used to complete the annual School Capacity (SCAP) return to the DfE. The projections are then used to calculate the Basic Needs allocations to local authorities to fund the provision of new school places (other than free schools).

When planning investment to provide additional school places, the Council will also take account of the Numbers on Roll (NOR), being the actual numbers of pupils attending school at a given date. As this data is historic, it is of limited relevance to future planning but does reflect previous trends. The Council will also take account of the capacity of existing buildings and sites, measured on a formula basis. This usually has limited relevance to the actual usage of buildings, but can indicate

where better use can be made of buildings and where there may be scope for short term solutions.

The GLA School Roll Projection Service enables comparisons to be made on a consistent basis with most other London boroughs including its neighbours, such as Hammersmith, Kensington, Brent, Camden and Wandsworth. The GLA projections are based on existing rolls, forward population estimates, migration, new housing developments, GP registrations, and Child Benefit data. The GLA model does not account for children in the Private, Voluntary and Independent (PVI) settings.

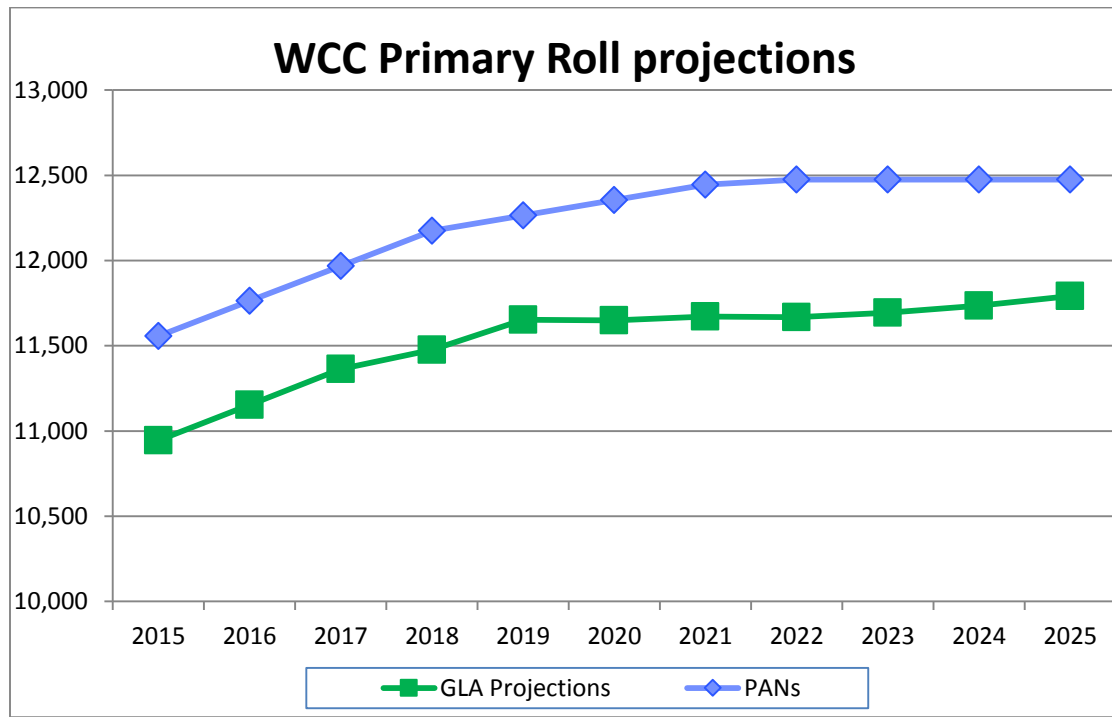
The GLA model does not take account of schools which are not yet open, or forecast the potential impact of regeneration.

A new Pan-London model is currently in development to take into account pupils in the independent sector, cross border movements, and also the effects of popular schools reaching capacity. The Pan-London model will yield results that are more consistent with the underlying total population data, and will allow boroughs to access information from neighbouring local authorities which will be beneficial to the LA.

The tables below compare the GLA projections of pupil numbers (allowing for cross-borough movement and an assumption of the proportion of Borough resident pupils educated outside the state sector), with the Council's Published Admissions Numbers taking account of the new places being delivered through the current and proposed investment programme. The details of this programme are shown in section 4.

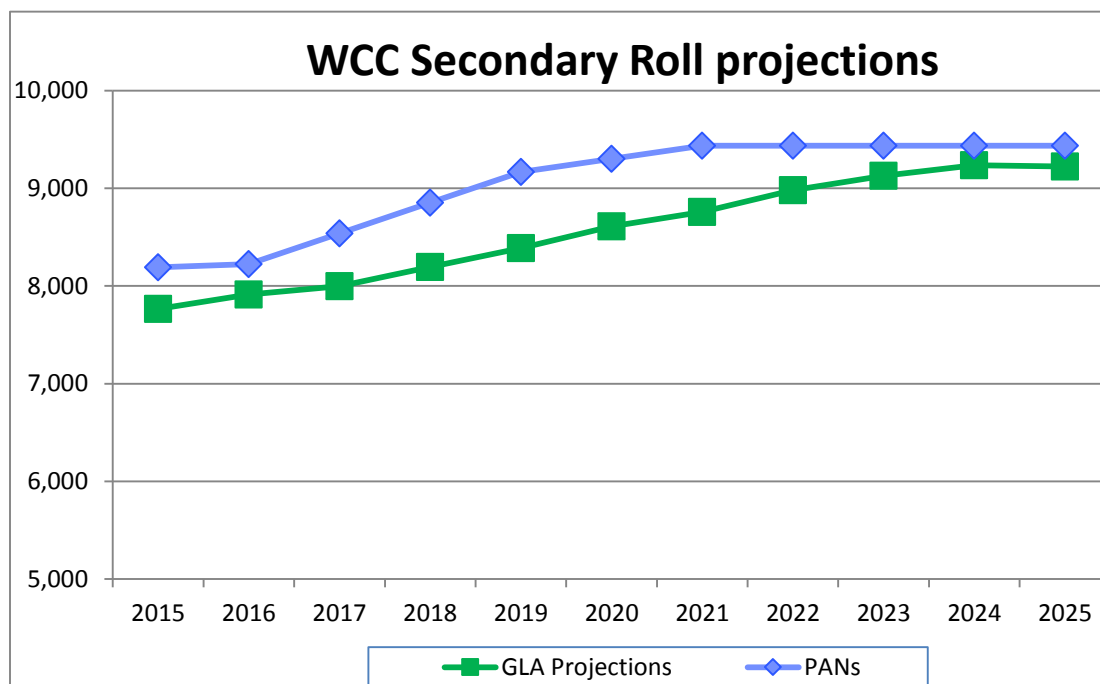
It will be seen that there is a sufficiency of places in both primary and secondary sectors, but this is only as a result of the investment programme. In particular, the sufficiency of places in the secondary sector is only assured if the proposals under consideration are delivered. Local authorities are also recommended to keep a minimum of 5% margin of spare places to cope with in-year admissions and enable mobility.

Primary



| Year | Published Admissions Number (PAN) | Projection | Difference PAN/Projection  |
|------|-----------------------------------|------------|----------------------------|
| 2015 | 11,557                            | 10,945     | 612 (5.6% surplus of PAN)  |
| 2020 | 12,355                            | 11,649     | 706 (6.06% surplus on PAN) |
| 2025 | 12,475                            | 11,792     | 683 (5.54% surplus of PAN) |

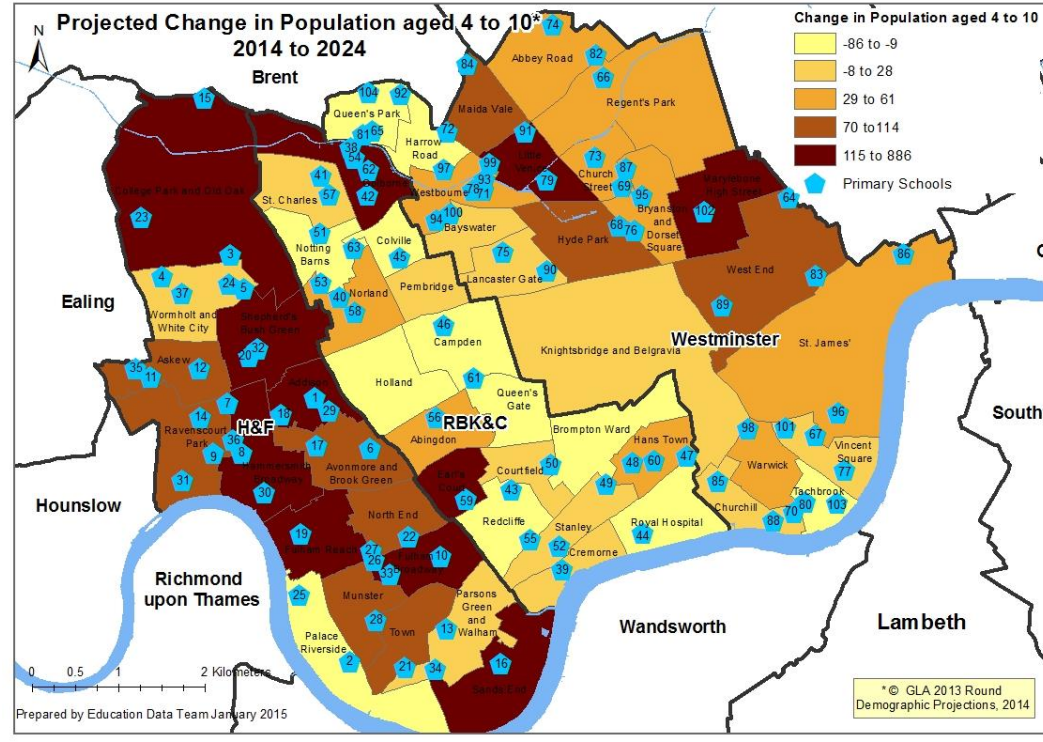
## Secondary



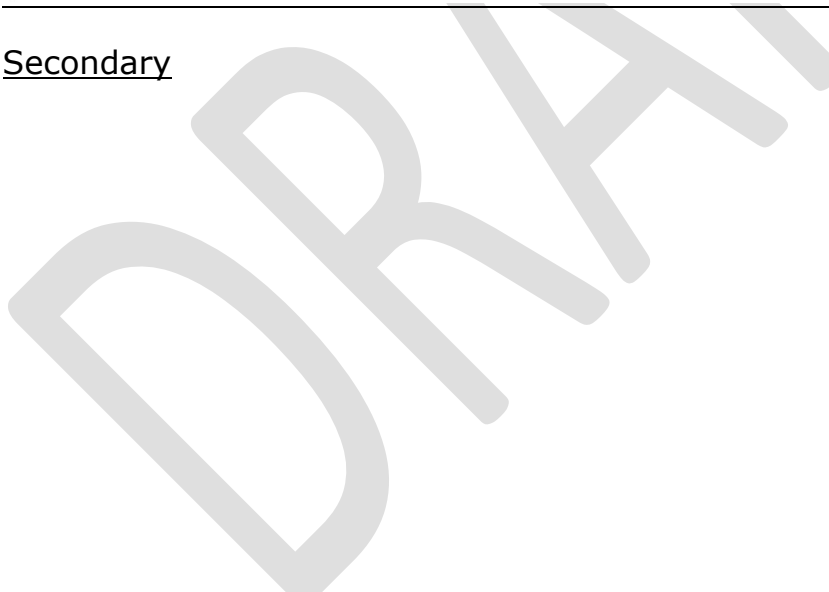
| Year | Published Admissions Number (PAN) | Projection (excluding 6 <sup>th</sup> form) | Difference PAN/projection  |
|------|-----------------------------------|---|----------------------------|
| 2015 | 8,133                             | 7,765                                       | 368 (4.52% surplus on PAN) |
| 2020 | 9,123                             | 8,610                                       | 513 (5.62% surplus on PAN) |
| 2025 | 9,438                             | 9,258                                       | 180 (1.95% surplus on PAN) |

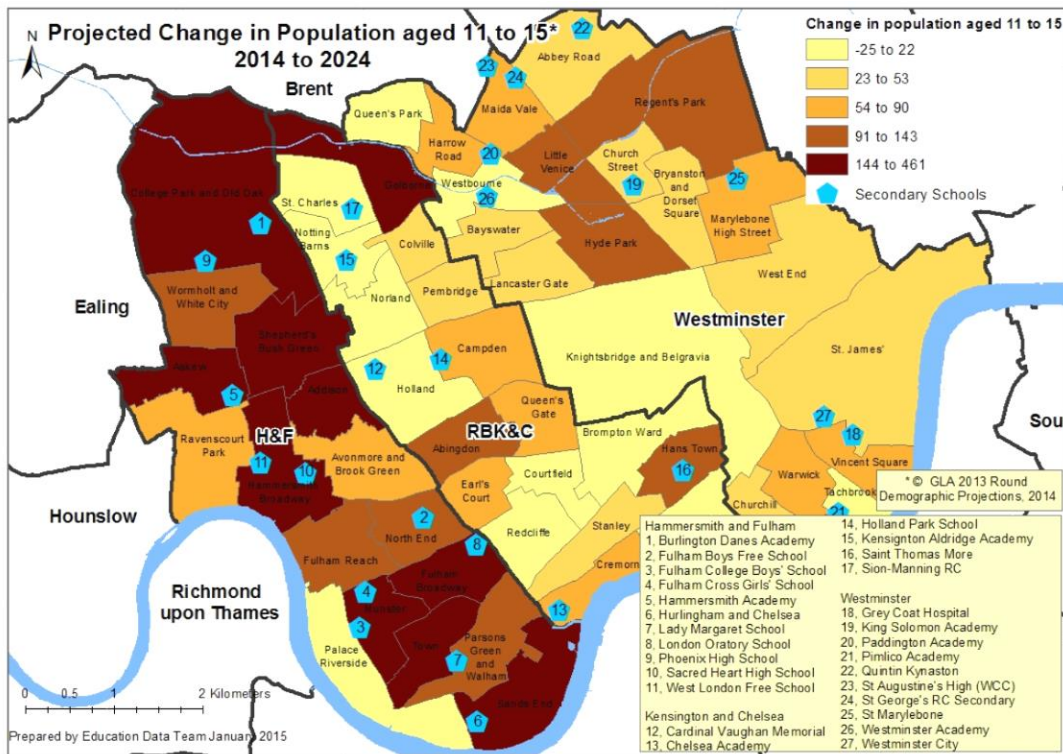
The following maps provided by the GLA for the three Councils illustrate where population growth for the primary and secondary sectors is expected.

# Primary



# Secondary





### 3. Analysis

- **Population Growth and Migration**

The GLA projections forecast pupil numbers increasing at both primary and secondary phase for the foreseeable future. These forecasts are consistent with ONS projections which, whilst showing a slight decline in birthrates, do not take into account regeneration projects.

No account is taken of regeneration proposals that have not yet been confirmed or are subject to consultation. These would include the estate regeneration schemes proposed in a number of areas such as Church Street. Major residential development is also expected on the site of the former Chelsea Barracks.



LAs must also respond to demand resulting from inward migration that has not been forecast. New arrivals account for the majority of 'in-year' school admissions, whereas the existing population account for most 'on-time applications'.

Different areas within Westminster also show variations in population growth. According to the GLA 2013 round Borough Preferred Option (BPO) based ward projections, the Marylebone and West End areas are expected to see higher levels of growth at both primary and secondary level compared to previous years and a decline in the more traditional areas of Queen's Park and Tachbrook.

The Post 16 population in Churchill ward is predicted to increase by 29% which is the largest percentage increase in the borough. The post 16 population in this ward is set to increase over three times the overall LA average of 8%.

These are not school roll projections, but illustrate wider population trends.

- ***Cross border movement***

In January 2014, 8,041 (78.3%) of primary pupils and 4,591 (57%) of secondary pupils in Westminster schools were resident in the borough.

870 (9.4%) of primary aged pupils and 1,254 (35.1%) of secondary aged pupils resident in the borough attended state schools in other boroughs.

Westminster is a net importer of 1,357 primary pupils and 2,202 at secondary level.

The proportion of children resident in other boroughs attending Westminster maintained schools has risen by 19.9% in the primary sector and 8.4% in the secondary sector during the period 2010-2014 (see Appendix 5).

The Greenwich Judgment, which means that priority for admissions cannot be given to borough residents, allows pupils free movement across borough borders and its effect is factored into future demand.

The distribution of cross borough movement at primary level is shown below.

Primary

| <b>Westminster Imports 2014 (Primary)</b> |                |                           | <b>Westminster Exports 2014 (Primary)</b> |                |                           |
|---|----------------|---------------------------|---|----------------|---------------------------|
| <b>Authority</b>                          | <b>Imports</b> | <b>% of Total Imports</b> | <b>Authority</b>                          | <b>Exports</b> | <b>% of Total Exports</b> |
| Camden                                    | 840            | 38%                       | Kensington and Chelsea                    | 514            | 58%                       |
| Brent                                     | 542            | 24%                       | Brent                                     | 231            | 27%                       |
| Lambeth                                   | 245            | 11%                       | Camden                                    | 74             | 9%                        |
| Kensington and Chelsea                    | 170            | 8%                        | Hammersmith and Fulham                    | 12             | 1%                        |
| Southwark                                 | 67             | 3%                        | Lambeth                                   | 7              | 1%                        |
| Other LAs                                 | 363            | 16%                       | Other LAs                                 | 32             | 4%                        |
|   | 2,227          | 100%                      |   | 870            | 100%                      |

Secondary

| <b>Westminster Imports 2014 (Secondary)</b> |                |                           | <b>Westminster Exports 2014 (Secondary)</b> |                |                           |
|---|----------------|---------------------------|---|----------------|---------------------------|
| <b>Authority</b>                            | <b>Imports</b> | <b>% of Total Imports</b> | <b>Authority</b>                            | <b>Exports</b> | <b>% of Total Exports</b> |
| Brent                                       | 761            | 22%                       | Kensington and Chelsea                      | 406            | 32%                       |
| Camden                                      | 730            | 21%                       | Hammersmith and Fulham                      | 213            | 18%                       |
| Lambeth                                     | 524            | 15%                       | Camden                                      | 203            | 16%                       |
| Southwark                                   | 432            | 13%                       | Brent                                       | 168            | 13%                       |
| Kensington and Chelsea                      | 207            | 6%                        | Lambeth                                     | 69             | 5%                        |
| All Other LAs                               | 802            | 23%                       | Other LAs                                   | 195            | 16%                       |
|   | 3,456          | 100%                      |   | 1,254          | 100%                      |

- **School Place Planning in neighbouring boroughs**

The pressures on school places in neighbouring boroughs, and beyond, has an impact on need and demand in Westminster. In addition to the draw of high-performing schools in Westminster, and the particular influence of faith schools, movements in population in other areas has an effect on school place planning (see Appendix 1).

- **Voluntary Aided sector**

The contribution of Schools in the Voluntary Aided sector in Westminster is significant. Of the 42 primary schools (including free schools and academies), 26 are VA schools: 19 are Church of England schools and 7 are Roman Catholic schools. VA schools cater for nearly half of all pupils on roll in Westminster at primary phase. Of the 10 secondary schools, 3 are Church of England schools, and one is a Roman Catholic school. Two others are Trust schools operated by United Learning Trust with a Christian philosophy, but the proportion of children taught in VA secondary schools is only about a quarter of the total.

Primary

| <b>Diocese</b>                 | <b>Borough resident</b> | <b>Other Tri-Borough resident</b> | <b>Non-Tri Borough resident</b> | <b>Total (including nursery)</b> |
|--------------------------------|-------------------------|-----------------------------------|---------------------------------|----------------------------------|
| Church of England (19 schools) | 3,183 (76%)             | 65                                | 917                             | 4,165                            |
| Roman Catholic (7 schools)     | 1,562 (78%)             | 115                               | 316                             | 1,993                            |
| Community Schools (16 schools) | 4,518 (81%)             | 53                                | 994                             | 5,565                            |
| Totals                         | 9,263 (79%)             | 223                               | 2,227                           | 11,723                           |

## Secondary

Identification of those offered a community place and those a place in a VA school is complex. The majority of pupils offered places in a VA secondary school are because of the primary school attended rather than Church attendance.

The following table shows the percentage of Westminster residents offered a school place at each of the VA secondary schools on offer day (March) and illustrates that the contribution of these schools to the education of Borough resident children remains very strong.

| <b>Diocese</b>                 | <b>Borough resident</b> | <b>Other Tri-Borough resident</b> | <b>Non-Tri Borough resident</b> | <b>Total (including 6<sup>th</sup> form)</b> |
|--------------------------------|-------------------------|-----------------------------------|---------------------------------|--|
| Church of England (4 schools)  | 1,401 (37%)             | 142                               | 2,212                           | 3,755  |
| Roman Catholic (1 school)      | 347 (51%)               | 31                                | 304                             | 682  |
| Community Schools (5 schools)* | 3,514 (68%)             | 205                               | 1,464                           | 5,183  |
| Totals                         | 5,262 (55%)             | 378                               | 3,890                           | 9,620  |

\* Excluding Marylebone Boys School

### • **Free Schools and Academies**

At start of the 2014/15 academic year, 17 schools have academy status (including those following conversion). These account for just over a quarter of schools in the borough:

- Primary - 5:
- Secondary - 10
- Alternative Provision – 1
- Special - 1

In autumn 2014, 13% of primary age pupils and 87% of secondary age pupils attended mainstream free schools or academies.

- **School Admissions**

All state-maintained schools are required to take part in a nationally coordinated admissions process for entry into Reception Class and Secondary Transfer (Year 6 to Year 7). Schools which are their own admissions authority (e.g. Voluntary Aided, Foundation, Free Schools and Academies) are free to administer their own in-year admissions process independent from the LA, though criteria and process must still be 'code compliant'.

These schools are bound by the following provisions:

- School Admissions Code
- School Standards and Framework Act 1998
- Locally agreed Fair Access Protocols
- Funding agreement with the EFA (in the case of Free Schools and Academies)

The School Admissions Code requires schools to participate in the coordinated admissions process for Reception Class and at Secondary Transfer. There is no requirement for schools which are their own 'admissions authority' to participate in 'in-year' co-ordination. The majority of both primary and secondary schools opt for either partial LA co-ordination or no co-ordination. All these schools are required to update the local authority on vacancies.

Free Schools and Academy chains can change their admissions criteria and allow up to 10% of their places to attract gifted and talented pupils. Any change of admission criteria will affect all establishments in the Academy or Free School chain. Although these establishments are independent of the local authority the Council continues to nurture a close relationship with free schools and academies as they are key partners in the provision of new school places

|                  | <b>Community schools</b> | <b>Free School &amp; Academies, Foundation or Voluntary Aided schools</b> | <b>Total</b> |
|------------------|--------------------------|---|--------------|
| <b>Primary</b>   | 8                        | 24  | 42           |
| <b>Secondary</b> | 0                        | 11  | 11*          |

\*Including Marylebone Boys School

- ***Welfare Reform***

Welfare reform and changes to social benefits has impacted some children and families in Westminster according to anecdotal evidence from schools. Children resident in areas of high property rents in the private housing sectors are most likely to be affected. However, roll counts have not changed significantly across the borough because of this. Further analysis will be done in this area.

- ***School Performance and Preferences***

School performance is a key factor in parental preference, and there is a high level of parental preference for local schools.

In February 2015, approximately 124 Westminster residents were recorded as being without an offer of a school place, compared to 29 children at the same time in 2014. All these children have been allocated places in schools with spare capacity. These figures do not include the additional offers made for some schools over their PAN. By September those additional offers will be absorbed and most schools will be back down to their PAN. Some schools request to continue exceeding their PAN, which is complaint with the Admissions Code.

There has been a drop in the number of Westminster residents offered places in Westminster schools. For entry in 2015, only 52% compared to 59% in 2014 make up to the total offers to Westminster residents. Attributed factors include an increase in applications to each school, faith criteria and an increase in siblings of children who are not Westminster residents. Although the resident cohort has not increased (1,164 in 2015 compared to 1,176 for 2014) the number of out-borough applications is likely to be higher than last year.

For data on school admissions, please see Appendix 3.

- **The independent sector**

The following table illustrates the proportion of resident school-age pupils attending independent schools in the private sector.

| Year | Primary population | Primary independent sector estimate | Secondary population | Secondary independent sector estimate |
|------|--------------------|-------------------------------------|----------------------|---------------------------------------|
| 2010 | 14,493             | 38%                                 | 8,802                | 33%                                   |
| 2011 | 13,735             | 32%                                 | 8,430                | 32%                                   |
| 2012 | 14,538             | 36%                                 | 8,824                | 33%                                   |
| 2013 | 15,344             | 41%                                 | 9,117                | 35%                                   |
| 2014 | 15,344             | 42%                                 | 9,117                | 36%                                   |

Using ONS Mid Year Estimates

The data illustrates that while the proportion of resident children attending independent schools has increased, the actual number attending LA maintained schools has remained roughly the same over the last 5 years in both primary and secondary sectors.

This, combined with the growing numbers of children resident in other boroughs attending Westminster schools, as noted above, helps to account for the previous and forecast rise in the school population.

- **Conclusions**

- I. The Council's current investment programme, alongside the Government's free school programme, will deliver sufficient primary school places until 2023,
- II. The Council has previously identified a need for additional secondary school places and is developing an investment programme to respond to this,
- III. Further places are likely to be required as a result of regeneration plans in addition to the current projections.

## 4. Progress on School Development

### Primary

| WCC School Place Planning<br>Primary - Reception - Year 6               |                            |        |   |                          |  |
|---|----------------------------|--------|---|--------------------------|--|
|   | Projected Pupil Population | PAN    | Surplus/Deficit<br>PAN number minus<br>Projected Population | New Provision/Expansions |  |
| Taken from SCAP 2013 return to the DFE using GLA population projections | 2014/15                    | 10,945 | 11,557  | 612                      | Ark Atwood = + 60 (Y3)<br>Minerva Academy = + 56 (Y3)<br>Pimlico Primary = + 60 (Y1)<br><b>TOTAL = 176</b>   |
|   | 2015/16                    | 11,153 | 11,733  | 580                      | ARK Atwood = + 60 (Y4)<br>Minerva Academy = + 56 (Y4)<br>Pimlico Primary = + 60 (Y2)<br><b>TOTAL = + 176</b>                                       |
|   | 2016/17                    | 11,365 | 11,939  | 574                      | Ark Atwood = + 60 (Y5)<br>Christ Church Bentinck = + 30 (R)<br>Minerva Academy = + 56 (Y5)<br>Pimlico Primary = + 60 (Y2)<br><b>TOTAL= + 206</b>   |
|   | 2017/18                    | 11,477 | 12,145  | 668                      | ARK Atwood = + 60 (Y6)<br>Christ Church Bentinck = + 30 (Y1)<br>Minerva Academy = + 56 (Y6)<br>Pimlico Primary = + 60 (Y3)<br><b>TOTAL = + 206</b> |
|   | 2018/19                    | 11,652 | 12,235  | 583                      | ARK Atwood = Complete<br>Christ Church Bentinck = + 30 (Y2)<br>Minerva Academy = + Complete<br>Pimlico Primary = + 60 (Y4)<br><b>TOTAL= + 90</b>   |
|   | 2019/20                    | 11,649 | 12,325  | 676                      | Christ Church Bentinck = + 30 (Y3)<br>Pimlico Primary = + 60 (Y5)<br><b>TOTAL= + 90</b>  |
|   | 2020/21                    | 11,672 | 12,415  | 743                      | Christ Church Bentinck = + 30 (Y4)<br>Pimlico Primary = + 60 (Y6)<br><b>TOTAL= + 90</b>  |
|   | 2021/22                    | 11,667 | 12,445  | 778                      | Christ Church Bentinck = + 30 (Y5)<br>Minerva Academy = Complete<br>Pimlico Primary = Complete<br><b>TOTAL= + 30</b>                               |
|   | 2022/23                    | 11,694 | 12,475  | 781                      | Christ Church Bentinck = + 30 (Y6)<br><b>TOTAL= + 30</b>   |
|   | 2023/24                    | 11,736 | 12,475  | 739                      | Christ Church Bentinck = complete<br><b>TOTAL= + 0</b>   |

Total new places = 918



## Secondary

| Westminster School Place Planning<br>Secondary - Year 7 - Year 11       |               |                            |       |   |  |
|---|---------------|----------------------------|-------|---|--|
| Taken from SCAP 2014 return to the DFE using GLA population projections | Academic Year | Projected Pupil Population | PAN   | Surplus/Deficit = PAN number minus Projected Population | New Provision/Expansions   |
|   | 2014/15       | 7,765                      | 8,133 | 368   | Marylebone Boys' = + 120 (Y7)<br><b>Total = + 120</b>  |
|   | 2015/16       | 7,912                      | 8,253 | 341   | Marylebone Boys' = + 120 (Y8)<br><b>Total = + 120</b>  |
|   | 2016/17       | 8,000                      | 8,373 | 373   | Marylebone Boys' = + 120 (Y9)<br><b>Total = + 120</b>  |
|   | 2017/18       | 8,194                      | 8,633 | 439   | Pimlico Academy = + 30 (Y7)<br>St George's RC = + 30 (Y7)<br>Marylebone Boys' = + 120 (Y10)<br>Westminster City = + 30 (Y7)<br>UTC Victoria for Y10-11 = +50<br><b>Total = + 260</b>                         |
|   | 2018/19       | 8,389                      | 8,903 | 514   | King Solomon Academy = + 30 (Y7)<br>Pimlico Academy = + 30 (Y8)<br>St George's RC = + 30 (Y8)<br>Marylebone Boys' = +120 (Y11)<br>Westminster City = + 30 (Y8)<br>UTC Victoria = +50<br><b>Total = + 310</b> |
|   | 2020/21       | 8,610                      | 9,113 | 503   | King Solomon Academy = + 30 (Y8)<br>Pimlico Academy = + 30 (Y9)<br>Marylebone Boys - complete<br>St George's RC = + 30 (Y9)<br>Westminster City = + 30 (Y9)<br>UTC Victoria = +50<br><b>Total = + 170</b>    |
|   | 2021/22       | 8,760                      | 9,283 | 523   | King Solomon Academy = + 30 (Y11)<br>Pimlico Academy = + 30 (Y10)<br>St George's RC = + 30 (Y10)<br>Westminster City = + 30 (Y10)<br>UTC Victoria = +50<br><b>Total = + 170</b>                              |
|   | 2022/23       | 8,980                      | 9,373 | 393   | King Solomon Academy = Complete<br>Pimlico Academy = +30 (Y11)<br>St George's RC = +30 (Y11)<br>Westminster City = +30 (Y11)<br><b>Total = + 90</b>  |
|   | 2022/23       | 9,129                      | 9,373 | 294   | St George's RC = complete<br>Pimlico Academy – complete<br>Westminster City - complete   |
| 2023/24   | 9,236         | 9,373                      | 137   | -   |  |

Total new places =1,310

## **5. Early Years**

The DfE has estimated that nationally 40% of 2 year olds are now eligible for a targeted early years place and has advised local authorities to plan for an 80% take-up from eligible parents. London has the lowest take up across the country with only 8 London boroughs above the national average as at October 2014.

In Westminster, 230 or 33% of 2 year old places have been taken up by eligible families, which is 50% below the national average.

There are a number of reasons why so few London boroughs reached the national level:

- not enough places were available to eligible families,
- Some boroughs with sufficient places need to improve engagement with eligible families,
- The expanded eligibility criteria to include 40% of families nationally only came into effect in September 2014 whereas previously take up was measured against those meeting the 20% criteria,
- eligible 2 year old places are being occupied by 3 year olds who are unable to move to a primary settings until the following academic year.

## **6. Other Children's Services provision**

Schools across the LA are making more use of their premises for other Children's Services and community purposes, these include Children's Centres, nurseries and youth clubs in order to provide a range of services such as:

- Breakfast clubs
- After school childcare (Stay and Play)
- Adult learning/education
- Twilight and weekend activities
- Health and well-being clinics
- Support groups e.g. space for training child minders
- Holiday clubs

## **7. Special Educational Needs**

The partnership with Kensington & Chelsea and Hammersmith & Fulham enables planning for SEN provision to be considered across the three boroughs, with the aim of providing an effective and efficient Local Offer of high quality school places.

There have been changes in the pattern of children's special educational needs over the past 5 – 10 years. Specifically the number of children with a Statement of SEN identifying autism as the primary area of need has doubled during this time, increasing to approximately 170; likewise there has been a significant increase in the number of young people with speech, language and communication needs. In Westminster there has been a 20% increase in the number of young people identified with moderate learning difficulties (MLD), which is in contrast with a decreasing number in the other London Boroughs. Analysis of the number of Westminster children with physical difficulties as a primary area of need indicates a three-fold increase, many of these children have additional complex learning needs.

Westminster operates two special schools: College Park School (for 65 children) and QEII School (for 96 children), both of which were rebuilt within the last 5 years. Kensington & Chelsea is planning to create a new special school in north Kensington for 80 pupils aged 3-19, with a scheduled opening date of April 2020.

### Schools and resource bases

St Marylebone Bridge Free School opened in September 2013 with 12 places for secondary age pupils with speech, language and communication needs in temporary accommodation for 3 years. The School will increase to a maximum of 84. Permanent site options are under consideration by the EFA.

The Council also has the following resource bases:

| <b>School/Resource base</b>     | <b>Age Range</b> | <b>Needs that the resource base provides for</b> | <b>Current Ofsted judgment (1 Sept 2014)</b>       | <b>Number of places offered</b> |
|---------------------------------|------------------|--|--|---------------------------------|
| Edward Wilson Primary School    | 4-11             | Visual impairment                                | Good   | 9                               |
| Millbank Academy                | 4-11             | Autism   | Outstanding  | 10                              |
| Churchill Gardens Academy       | 4-11             | Speech, Language and Communication Needs         | The school is awaiting its first Ofsted inspection | 40                              |
| St Augustine's Secondary School | 11-16            | Hearing impairment                               | Outstanding  | 10                              |
| Pimlico Academy                 | 11-16            | Speech, Language and Communication Needs         | Outstanding  | 10                              |

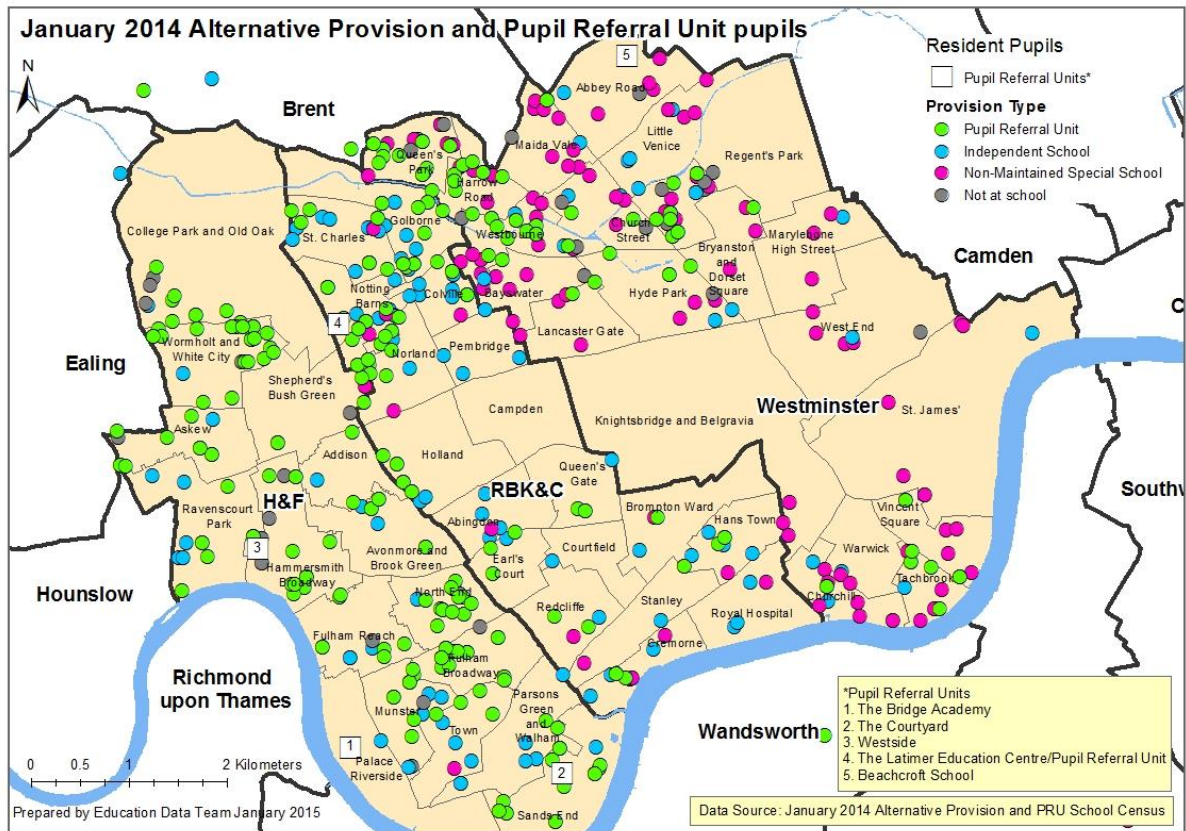
- 16-25 age group

Kennet West Skills Centre, adjacent to QEII School, was funded by the DfE's 16-19 Demographic Growth Capital Fund, and opened in October 2014. The new accommodation provides education and training facilities for additional 20 full time and 20 part time post 16 LLDD learners, drawing pupils from both the Council's special schools and will also meet demand from Kensington & Chelsea. The kitchen facility will be used as a training facility, a restaurant, support space and other training rooms, and will help the Council in meeting its new statutory duties under the Apprenticeship, Skills, Children and Learning Act 2009.

The vocational curriculum will be developed in collaboration with Westminster Kingsway College (WKC), an FE provider of Hospitality and Catering, working with Learners with learning difficulties and/or disabilities and also with Peter Jones Enterprise Academy.

## Alternative Provision

The TBAP Multi-Academy Trust (MAT) has been established to oversee the delivery of alternative education provision across RBKC, H&F and Westminster. The Beachcroft AP School moved from Shirland Road to a new building on the Finchley Road campus in 2012 and became an academy in May 2014. A 12-place primary AP offer will commence in September 2016.



One of the biggest single indicators of successful outcomes for Alternative Provision is related to NEETs (Not in Education, Employment and Training) in the post-16 sector, between January 2014 and January 2015. The following table shows the comparative number of NEETs across the three boroughs.

|                 | <b>Hammersmith &amp; Fulham</b> | <b>Kensington &amp; Chelsea</b> | <b>Westminster</b> |
|-----------------|---------------------------------|---------------------------------|--------------------|
| NEET Year 12-14 | 109 to 84 (2.4%)                | 91 to 67 (3.7%)                 | 132 to 74 (2.4%)   |

The importance of reducing NEETs cannot be underestimated: nationally some 15% of long term NEETs die within 10 years of leaving school. TBAP Academies work with a range of other local providers to offer the support most appropriate to each individual student. The success of the Bridge AP academy provision is reflected in Westminster by:

- The demonstrable reduction of NEETs;
- The reduction in statements and referrals for support for behaviour;
- The reduced need for other SEN provision related to such needs.

## **8. Post 16**

In January 2014, 1,004 post-16 Westminster resident students attended school 6<sup>th</sup> forms, and a further 600 at other colleges. All secondary schools in Westminster provide Post 16 provision. Over half of students in the maintained school sector are Westminster residents. Between 2013 and 2015, the GLA estimated that the Post 16 population would grow by 1.1% when the participation age rises to 18 in September 2015. Some of this increase will be absorbed by maintained schools with 6<sup>th</sup> form provision but the majority is likely to be within other Further Education or apprenticeship providers.

The figures for NEETs are shown in section 8 above.

There is sufficient capacity to meet demand for mainstream Post 16 students, but there is a requirement for additional SEN and vocational provision leading to apprenticeships and supported internships for students with SEND.

## **9. Regeneration and development**

A number of housing estates across Westminster are subject to regeneration proposals. The impact of regeneration and development has not been calculated where schemes are still at early stages of consideration. However, in the largest area at Church Street, development has been planned for several years, and therefore earlier strategies to deliver additional primary school are being progressed.

A number of private developments are proposed in Westminster which will be subject to an analysis of 'child yield' in order that an appropriate contribution to education provision can be made.

## **10. Funding for new schools**

Where new provision is required, the Council would expect that developer contributions (from s106 or CIL levies), external Government grant (including uncommitted Basic Need allocations) and funding for free schools, will meet the majority of the funding.

- **Planning and infrastructure contributions**

The Council is currently holding £2M in uncommitted s106 funds for education projects. Subject developments with planning proceeding, further contributions may be available.

The Community Infrastructure Levy (CIL) is a non-negotiable tax on development and is not site specific. No contributions have yet been received from CIL, which is expected to be applicable in late 2015.

- **DfE Allocations for Basic Need provision**

Funding allocations by the DfE for new school places (Basic Need) are based on statistical returns on projected pupil numbers.

The pattern of Basic Need Allocations since 2013 has been as follows:

|  |          |
|--|----------|
| Basic Need Allocation 2013 to 2015 (two years) | £4.8M    |
| Basic Need Allocation 2015-16                  | £6.295M  |
| Basic Need Allocation 2016-17                  | £6.61M   |
| Total  | £17.705M |

The Council has a NIL allocation for Basic Need grant for 2018.

### **11. Investment Programme for Schools**

Section 4 above illustrates the existing and proposed investment programme. Whilst the need for primary school places has currently been met, the pupil population projections indicate the need for additional secondary school places. In addition to Marylebone Boys School and the UTC Victoria, four schools, King Solomon Academy, St George's RC Academy, Pimlico Academy, and Westmister City Boys, have been selected for expansion to provide over 500 new places, offering the equivalent of 1 form of entry (up to 30 places) per year group (excluding 6<sup>th</sup> form), and is expected that these projects can be delivered within the capital resources available. These schools are included in the table of investments in section 4 above. The programme for secondary schools is subject to consultation and approval. It is expected that the capital resources from unallocated Basic Need and planning contributions will be sufficient to deliver the additional places which are planned.

The investment programme anticipates to some extent the potential increased need for school places resulting from regeneration schemes. However as these schemes are progressed, a further analysis will be carried out. The Strategy will be revised annually to reflect these changes.

Ian Heggs  
Director of Schools

Alan Wharton  
Head of Asset Strategy



## **Appendices**

1. Neighbouring Borough School Place Planning proposals
2. School Census information showing vacancies and PAN 2014
3. Data for Schools Admissions 2014
4. Ofsted ratings
5. National Census Data

DRAFT

## **Appendix 1: Neighbouring Borough School Place Programme**

### Brent's Primary Expansion

2014 The LA has managed to keep pace with demand for primary places. Measures have been taken to include a bulge provision to create sufficient places to meet demand for September 2014.

2016 The LA will need a further 6FE.

### Brent's Secondary Expansion

Demand for year 7 places is projected to increase as greater numbers of primary pupils transfer to secondary phase

2014 Sufficient places to meet demand

2017 Uncertainty of when free schools will open may cause a shortage at secondary phase by 2017/2018.

### Ealing Primary Expansion

2014 Created a bulge provision to create sufficient places to meet demand

2016 6 FE need to create sufficient places

### Ealing Secondary Expansion

2015 New 4FE secondary free school opening in September

2016 2FE expansion in September

2018 2FE shortfall identified in Ealing and Hanwell rising to 5FE by 2019.

### RBKC Primary Expansion

2015 Planned expansion of Marlborough School by 30 spaces per year

Fox school providing 30 permanent spaces in place of bulge class

2016 1 FE school on Warwick Road (new development)

### RBKC Secondary Expansion

2014 Kensington Aldridge Academy: 900 places + 240 Sixth Form

School place planning information has not been obtained from Wandsworth or Richmond.

## Appendix 2: School Census information showing vacancies and Published Admissions Numbers, October 2014

### Primary

| School Name                          | Total PAN | Nursery roll | Total Roll R to Yr 6 | Surplus places | Percent surplus |
|--------------------------------------|-----------|--------------|----------------------|----------------|-----------------|
| ARK Atwood Primary Academy           | 240       | n/a          | 236                  | 4              | 2%              |
| Minerva Academy                      | 188       | n/a          | 100                  | 88             | 47%             |
| Barrow Hill Junior School            | 240       | n/a          | 227                  | 13             | 5%              |
| Paddington Green Primary School      | 420       | 30           | 307                  | 113            | 27%             |
| CHURCHILL GARDENS CP School          | 210       | 40           | 238                  |                |                 |
| Edward Wilson Primary School         | 392       | 45           | 363                  | 29             | 7%              |
| Essendine Primary School             | 450       | 40           | 425                  | 25             | 6%              |
| GATEWAY PRIMARY SCHOOL               | 630       | 58           | 629                  | 1              | 0%              |
| MILLBANK ACADEMY                     | 420       | 26           | 412                  | 8              | 2%              |
| Wilberforce Primary School           | 420       | 24           | 301                  | 119            | 28%             |
| George Eliot Primary School          | 420       | 40           | 412                  | 8              | 2%              |
| Hallfield Primary School             | 630       | 76           | 518                  | 112            | 18%             |
| Robinsfield Infants                  | 180       | 26           | 169                  | 11             | 6%              |
| Queens Park Primary School           | 294       | 35           | 267                  | 27             | 9%              |
| All Souls CE Primary School          | 210       | 24           | 165                  | 45             | 21%             |
| BURDETT COUTTS                       | 378       | 22           | 313                  | 65             | 17%             |
| Hampden Gurney C.E. Primary          | 210       | 31           | 205                  | 5              | 2%              |
| OUR LADY OF DOLOURS SCHOOL           | 315       | 27           | 267                  | 48             | 15%             |
| St Augustine's Primary School        | 210       | 24           | 206                  | 4              | 2%              |
| ST BARNABAS CE PRIMARY SCHOOL        | 161       | n/a          | 140                  | 21             | 13%             |
| ST CLEMENT DANES CE PRIMARY SC       | 210       | 24           | 202                  | 8              | 4%              |
| St. Edward's RC Primary School       | 420       | 32           | 362                  | 58             | 14%             |
| ST GABRIEL'S CE PRIMARY              | 210       | n/a          | 184                  | 26             | 12%             |
| St George's(Hanover Sq)School        | 210       | n/a          | 199                  | 11             | 5%              |
| SOHO PARISH CE SCHOOL                | 159       | n/a          | 150                  | 9              | 6%              |
| St.James'& St.Michael's School       | 175       | 12           | 156                  | 19             | 11%             |
| St. Joseph's Catholic Primary School | 294       | 39           | 275                  | 19             | 6%              |
| ST. LUKE'S CE PRIMARY SCHOOL         | 210       | n/a          | 181                  | 29             | 14%             |
| St Mary Magdalene School             | 210       | 23           | 202                  | 8              | 4%              |
| St Mary's Bryanston Sq.School        | 210       | 28           | 200                  | 10             | 5%              |
| St Mary of the Angels Catholic       | 315       | 30           | 289                  | 26             | 8%              |
| ST.MATTHEW'S WESTMINSTER             | 210       | 22           | 171                  | 39             | 19%             |
| ST PETER'S C OF E                    | 210       | n/a          | 206                  | 4              | 2%              |
| ST PETERS EATON SQUARE PRIMARY       | 310       | 10           | 283                  | 27             | 9%              |
| ST.SAVIOURS SCHOOL                   | 210       | 30           | 204                  | 6              | 3%              |
| ST STEPHENS CE PRIMARY SCHOOL        | 210       | 24           | 176                  | 34             | 16%             |
| St Vincent's Catholic Primary School | 210       | 26           | 205                  | 5              | 2%              |
| St. VINCENT DE PAUL PRIMARY SC       | 210       | 32           | 205                  | 5              | 2%              |
| King Solomon Academy                 | 420       | 44           | 413                  | 7              | 2%              |

|                               |               |            |               |             |            |
|-------------------------------|---------------|------------|---------------|-------------|------------|
| Pimlico Primary               | 120           | n/a        | 55            | 65          | 54%        |
| Westminster Cathedral School  | 210           | n/a        | 197           | 13          | 6%         |
| Christ Church Bentinck School | 240           | 24         | 217           | 23          | 10%        |
|                               |               |            |               |             |            |
| <b>Total</b>                  | <b>11,801</b> | <b>968</b> | <b>10,632</b> | <b>1197</b> | <b>10%</b> |

## Secondary

| School Name                 | Total PAN    | Total Roll Year<br>7 - 11 | Surplus<br>places | Percent surplus |
|-----------------------------|--------------|---------------------------|-------------------|-----------------|
| Quintin Kynaston School     | 1,050        | 1,019                     | 31                | 3%              |
| The Grey Coat Hospital      | 755          | 767                       | 0                 | 0               |
| The St Marylebone School    | 750          | 741                       | 9                 | 1%              |
| Westminster City School     | 670          | 632                       | 38                | 6%              |
| St. Augustine's High School | 750          | 755                       | 0                 | 0               |
| St George's Catholic School | 720          | 713                       | 7                 | 1%              |
| Marylebone Boys             | 180          | 119                       | 61                | 34%             |
| Paddington Academy          | 900          | 895                       | 5                 | 1%              |
| Westminster Academy         | 900          | 912                       | 0                 | 0               |
| King Solomon Academy        | 300          | 315                       | 0                 | 0               |
| PIMLICO ACADEMY             | 1,050        | 1,025                     | 25                | 2%              |
|                             |              |                           |                   |                 |
| <b>Total</b>                | <b>8,025</b> | <b>7,893</b>              | <b>176</b>        | <b>2%</b>       |

## Appendix 3: Data for School Admissions 2014

### Primary

| WESTMINSTER PRIMARY SCHOOLS - PREFERENCES | 2014 |                 |                 |                       |       |
|---|------|-----------------|-----------------|-----------------------|-------|
| School                                    | PAN  | 1 <sup>st</sup> | 2 <sup>nd</sup> | All other preferences | Total |
| All Souls CE                              | 30   | 28              | 6               | 20                    | 54    |
| ARK Atwood Primary Academy                | 60   | 79              | 59              | 90                    | 228   |
| Burdett Coutts CE                         | 54   | 23              | 16              | 46                    | 85    |
| CET Primary School Westminster            | 56   | 10              | 5               | 39                    | 54    |
| Christ Church Bentinck CE                 | 30   | 20              | 18              | 51                    | 89    |
| Churchill Gardens                         | 30   | 27              | 20              | 36                    | 83    |
| Edward Wilson                             | 56   | 42              | 16              | 36                    | 94    |
| Essendine                                 | 60   | 39              | 24              | 59                    | 122   |
| Gateway                                   | 90   | 69              | 71              | 83                    | 223   |
| George Eliot                              | 60   | 68              | 42              | 84                    | 194   |
| Hallfield                                 | 90   | 51              | 11              | 38                    | 100   |
| Hampden Gurney CE                         | 30   | 42              | 55              | 66                    | 163   |
| King Solomon Academy                      | 60   | 122             | 73              | 95                    | 290   |
| Millbank                                  | 60   | 47              | 35              | 74                    | 156   |
| Our Lady of Dolours RC                    | 45   | 24              | 18              | 36                    | 78    |
| Paddington Green                          | 60   | 21              | 18              | 79                    | 118   |
| Pimlico Primary                           | 60   | 25              | 31              | 61                    | 117   |
| Queen's Park                              | 42   | 37              | 18              | 71                    | 126   |
| Robinsfield Infant                        | 60   | 66              | 42              | 71                    | 179   |
| Soho Parish CE                            | 24   | 19              | 11              | 35                    | 65    |
| St Augustine's CE                         | 30   | 36              | 38              | 57                    | 131   |
| St Barnabas' CE                           | 23   | 13              | 9               | 36                    | 58    |
| St Clement Dane's CE                      | 30   | 33              | 16              | 32                    | 81    |
| St Edward's RC                            | 60   | 24              | 22              | 67                    | 113   |
| St Gabriel's CE                           | 30   | 18              | 19              | 36                    | 73    |
| St George's Hanover Square CE             | 30   | 26              | 16              | 45                    | 87    |
| St James's & St John CE                   | 25   | 19              | 10              | 36                    | 65    |
| St Joseph's RC                            | 42   | 65              | 35              | 58                    | 158   |
| St Luke's CE                              | 30   | 25              | 10              | 46                    | 81    |
| St Mary Magdalene CE                      | 30   | 27              | 14              | 49                    | 90    |
| St Mary of the Angels RC                  | 45   | 38              | 28              | 33                    | 99    |
| St Mary's Bryanston Square CE             | 30   | 28              | 23              | 39                    | 90    |
| St Matthew's                              | 30   | 20              | 12              | 33                    | 65    |
| St Peter's (Chippenham Mews) CE           | 30   | 22              | 39              | 49                    | 110   |
| St Peter's Eaton Square CE                | 50   | 53              | 36              | 61                    | 150   |

|                          |              |              |              |    |              |
|--------------------------|--------------|--------------|--------------|----|--------------|
| St Saviour's CE          | 30           | 48           | 30           | 65 | 143          |
| St Stephen's CE          | 30           | 18           | 12           | 7  | 47           |
| St Vincent de Paul RC    | 30           | 41           | 20           | 25 | 86           |
| St Vincent's RC          | 30           | 43           | 27           | 58 | 128          |
| Westminster Cathedral RC | 30           | 24           | 35           | 28 | 87           |
| Wilberforce              | 60           | 26           | 9            | 40 | 75           |
| <b>Total</b>             | <b>1,782</b> | <b>1,506</b> | <b>1,049</b> |    | <b>4,635</b> |

## Secondary

| School<br>*Academy ^Free school    | Applications for Westminster Schools –<br>By Preference and Residence |              |                |
|------------------------------------|---|--------------|----------------|
|                                    | 1st preference  |              |                |
|                                    | Total   | Westminster  | Out of Borough |
| Paddington Academy                 | 737   | 518          | 219            |
| St Augustine's C of E High School  | 567   | 335          | 232            |
| St Marylebone School               | 1017  | 318          | 699            |
| King Solomon Academy               | 403   | 313          | 90             |
| St George's Catholic School        | 574   | 282          | 292            |
| Westminster Academy                | 492   | 274          | 218            |
| Quintin Kynaston Community Academy | 478   | 255          | 223            |
| Grey Coat Hospital                 | 1050  | 229          | 821            |
| Pimlico Academy                    | 654   | 218          | 436            |
| Marylebone Boys' Free School       | 457   | 217          | 240            |
| Westminster City School            | 333   | 102          | 231            |
| <b>Totals</b>                      | <b>6,762</b>  | <b>3,061</b> | <b>3,701</b>   |

| School<br>*Academy ^Free school    | PAN         | 1st         | 2nd         | 3rd         | 4th        | 5th        | 6th        | Total<br>2015 | Total<br>2014 | %<br>Dif. |
|------------------------------------|-------------|-------------|-------------|-------------|------------|------------|------------|---------------|---------------|-----------|
| Grey Coat Hospital                 | 151         | 365         | 292         | 169         | 126        | 55         | 38         | 1045          | 1040          | 0%        |
| St Marylebone School               | 150         | 359         | 284         | 196         | 95         | 53         | 23         | 1010          | 1067          | -5%       |
| Paddington Academy                 | 180         | 262         | 157         | 131         | 87         | 53         | 42         | 732           | 729           | 0%        |
| Pimlico Academy                    | 210         | 190         | 139         | 96          | 100        | 70         | 52         | 647           | 597           | 8%        |
| St Augustine's C of E High School  | 156         | 136         | 131         | 133         | 79         | 52         | 30         | 561           | 474           | 18%       |
| St George's Catholic School        | 150         | 124         | 136         | 123         | 88         | 56         | 40         | 567           | 547           | 4%        |
| Quintin Kynaston Community Academy | 210         | 103         | 111         | 113         | 66         | 46         | 34         | 473           | 508           | -7%       |
| Westminster Academy                | 180         | 100         | 115         | 102         | 74         | 51         | 40         | 482           | 430           | 12%       |
| Marylebone Boys' School            | 120         | 87          | 90          | 107         | 91         | 50         | 30         | 455           | 366           | 24%       |
| Westminster City School            | 140         | 85          | 70          | 72          | 39         | 31         | 31         | 328           | 364           | -10%      |
| King Solomon Academy               | 60          | 78          | 108         | 88          | 53         | 50         | 20         | 397           | 431           | -8%       |
| <b>Westminster</b>                 | <b>1707</b> | <b>1889</b> | <b>1633</b> | <b>1330</b> | <b>898</b> | <b>567</b> | <b>380</b> | <b>6,697</b>  | <b>6,553</b>  | <b>2%</b> |

The Admission school preference numbers in these tables slightly differ as the Y7 process is still ongoing. For the purposes of the strategy the slight differences should be ignored as they do not affect the outcome.

DRAFT

## Appendix 4: Ofsted ratings

| PRIMARY                        | Ofsted Inspection | Judgement |       |      |         |           |
|--------------------------------|-------------------|-----------|-------|------|---------|-----------|
|                                |                   | All       | Teach | Lead | Achieve | Behaviour |
| All Souls' CE                  | Jun-11            | G         | G     | G    | G       | G         |
| Atwood Academy *               | Jul-13            | O         | O     | O    | O       | O         |
| Barrow Hill                    | Sep-14            | G         | G     | G    | G       | G         |
| Burdett Coutts CE              | Dec-14            | G         | G     | G    | G       | G         |
| Minerva Academy*               | Feb-14            | RI        | RI    | RI   | RI      | RI        |
| Christ Church Bentinck CE      | Oct-13            | G         | G     | O    | G       | O         |
| Churchill Gardens Academy*     | Sep-12            | RI        | RI    | RI   | RI      | RI        |
| Edward Wilson                  | Mar-13            | G         | G     | G    | G       | G         |
| Essendine                      | Feb-13            | G         | G     | G    | G       | G         |
| Gateway Academy*               | Jun-08            | O         | O     | O    | O       | O         |
| George Eliot                   | May-12            | O         | O     | O    | O       | O         |
| Hallfield                      | Oct-13            | G         | G     | G    | G       | G         |
| Hampden Gurney CE              | May-09            | O         | O     | O    | O       | O         |
| Millbank Academy*              | May-13            | O         | O     | O    | O       | O         |
| Our Lady Of Dolours RC         | Mar-13            | G         | G     | G    | G       | G         |
| Paddington Green               | Jul-12            | G         | G     | O    | G       | G         |
| Pimlico Academy*               |                   |           |       |      |         |           |
| Queen's Park                   | Jan-13            | G         | G     | G    | G       | G         |
| Robinsfield Infant School      | Nov-14            | G         | G     | G    | G       | G         |
| St Augustine's CE              | Oct-13            | G         | G     | G    | G       | G         |
| St Barnabas CE                 | Jan-13            | G         | G     | G    | G       | O         |
| St Clement Danes CE            | Nov-14            | O         | O     | O    | O       | O         |
| St Edward's RC                 | Oct-14            | G         | G     | G    | G       | G         |
| St Gabriel's CE                | Mar-14            | G         | G     | G    | G       | G         |
| St George's Hanover Square CE  | Nov-11            | G         | G     | G    | G       | G         |
| St James and St John CE        | Mar-12            | G         | G     | G    | G       | G         |
| St Joseph's RC                 | Jun-08            | O         | O     | O    | O       | O         |
| St Luke's Ce Primary School    | Mar-12            | G         | G     | G    | G       | G         |
| St Mary's Bryanston Square CEI | Feb-14            | RI        | RI    | RI   | RI      | G         |
| St Mary Magdalene's RC         | Oct-12            | G         | G     | G    | G       | G         |
| St Mary Of The Angels RC       | Feb-12            | G         | G     | G    | G       | G         |
| St Matthew's CE                | Oct-13            | G         | G     | G    | G       | G         |
| St Peter's CE                  | Feb-14            | G         | G     | G    | G       | G         |
| St Peter's Eaton Square        | Oct-06            | O         | O     | O    | O       | O         |
| St Saviour's CE                | Oct-08            | O         | O     | O    | O       | O         |
| St Stephen's CE                | Feb-13            | G         | G     | G    | G       | G         |



|                          |        |    |    |    |    |   |
|--------------------------|--------|----|----|----|----|---|
| St Vincent De Paul RC    | Apr-14 | RI | RI | RI | RI | G |
| St Vincent's RC          | Oct-10 | O  | O  | O  | O  | O |
| Soho Parish CE           | Mar-11 | G  | G  | G  | G  | G |
| Westminster Cathedral RC | Jun-13 | G  | G  | G  | G  | O |
| Wilberforce Academy*     | Jun-13 | RI | RI | RI | RI | G |

| School                        | Ofsted Inspection | Judgement |       |      |         |           |
|-------------------------------|-------------------|-----------|-------|------|---------|-----------|
|                               |                   | All       | Teach | Lead | Achieve | Behaviour |
| <b>Secondary</b>              |                   |           |       |      |         |           |
| Grey Coat Hospital Academy    | Mar-09            | O         | G     | G    | G       | O         |
| King Solomon Academy          | May-13            | O         | O     | O    | O       | O         |
| Marylebone Boys'              |                   |           |       |      |         |           |
| Paddington Academy            | Oct-11            | O         | G     | G    | G       | G         |
| Pimlico Academy               | Dec-10            | O         | G     | O    | O       | O         |
| Quintin Kynaston Academy      | Sep-14            | RI        | RI    | G    | RI      | G         |
| St Augustine's Ce High School | Oct-13            | O         | O     | O    | O       | G         |
| St George's Academy           | Nov-14            | O         | O     | O    | O       | O         |
| St Marylebone Academy         | Apr-14            | O         | O     | O    | O       | O         |
| Westminster Academy           | Mar-13            | O         | O     | O    | O       | G         |
| Westminster City Academy      | Feb-13            | G         | G     | G    | G       | G         |

## Appendix 5: National Census Data

### Westminster 2010-2014 residents

|             | ONS MYPE<br>2013 | Residents<br>attending LA<br>maintained<br>schools | Residents<br>attending other<br>boroughs<br>maintained<br>schools | Residents<br>attending LA<br>maintained<br>schools | Residents attending<br>other boroughs<br>maintained schools | Private sector<br>estimate | All residents | Pupils residing in<br>other LAs attending<br>LA maintained<br>schools |
|-------------|------------------|--|---|--|---|----------------------------|---------------|---|
| <b>2014</b> |                  |  |   |  |   |                            |               |   |
| Prim        | 15344            | 8,041  | 874   | 52%  | 6%  | 42%                        | 100%          | 2,227   |
| Sec         | 9117             | 4,591  | 1,268   | 50%  | 14%   | 36%                        | 100%          | 3,461   |
| Prim/Sec    | 24,461           | 12,632   | 2,142   | 52%  | 9%  | 40%                        | 100%          | 5,688   |
| <b>2013</b> |                  |  |   |  |   |                            |               |   |
| Prim        | 15344            | 8,195  | 925   | 53%  | 6%  | 41%                        | 100%          | 2,047   |
| Sec         | 9117             | 4,600  | 1,299   | 50%  | 14%   | 35%                        | 100%          | 3,271   |
| Prim/Sec    | 24,461           | 12,795   | 2,224   | 52%  | 9%  | 39%                        | 100%          | 5,318   |
| <b>2012</b> |                  |  |   |  |   |                            |               |   |
| Prim        | 14538            | 8,437  | 916   | 58%  | 6%  | 36%                        | 100%          | 1,882   |
| Sec         | 8824             | 4,502  | 1,395   | 51%  | 16%   | 33%                        | 100%          | 3,189   |
| Prim/Sec    | 23,362           | 12,939   | 2,311   | 56%  | 10%   | 35%                        | 100%          | 5,071   |
| <b>2011</b> |                  |  |   |  |   |                            |               |   |
| Prim        | 13735            | 8,388  | 922   | 61%  | 7%  | 32%                        | 100%          | 1,856   |
| Sec         | 8430             | 4,317  | 1,416   | 51%  | 17%   | 32%                        | 100%          | 3,157   |
| Prim/Sec    | 22,165           | 12,715   | 2,338   | 57%  | 11%   | 32%                        | 100%          | 5,013   |
| <b>2010</b> |                  |  |   |  |   |                            |               |   |
| Prim        | 14493            | 8,050  | 886   | 56%  | 6%  | 38%                        | 100%          | 1,857   |
| Sec         | 8082             | 4,037  | 1,389   | 50%  | 17%   | 33%                        | 100%          | 3,191   |
| Prim/Sec    | 22,575           | 12,127   | 2,275   | 54%  | 10%   | 36%                        | 100%          | 5,048   |